

**NOVEMBER 1883**

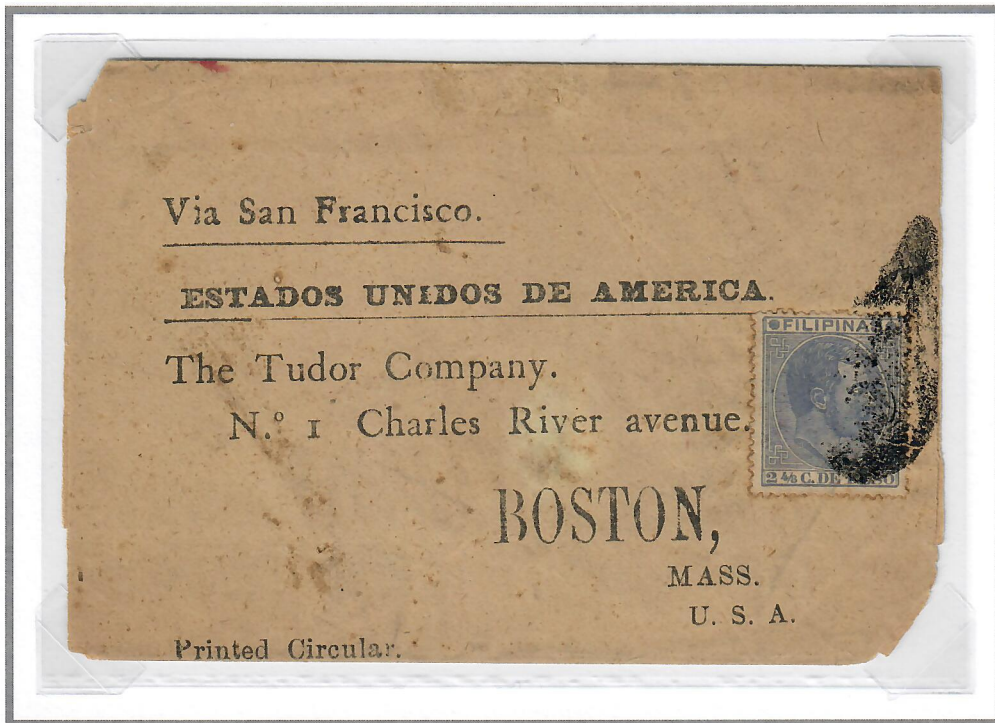
**2-4/8 CENTIMOS DE PESO ULTRAMARINE**

**FIRST RETOUCH**

**PARRILLA CANCELLATION**



**PRINTED MATTER OVERSEAS RATE**



**CIRCA 1882 – MANILA TO BOSTON, MASSECHUSSETS (USA), VIA SAN FRANCISCO**  
Stamp Affixed Paying 2-1/2c Printed Circular Rate, Tied with Parrilla Cancel  
San Francisco (June 11) Red Transit Circular Cancel on Reverse