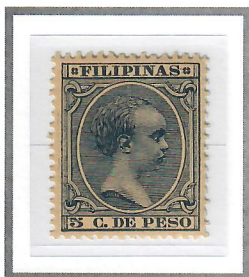
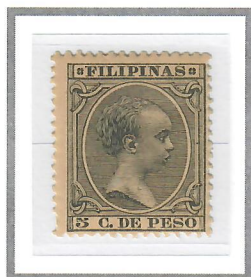


1890 – 1897

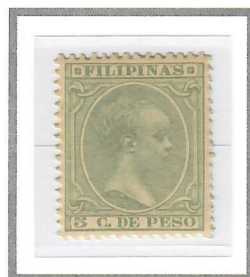
POSTAGE STAMPS



5c Dark Blue (1890)  
Cliché I – Gum Type A  
Scott #151



5c Slate Green (1890)  
Cliché I – Gum Type A  
Scott #152



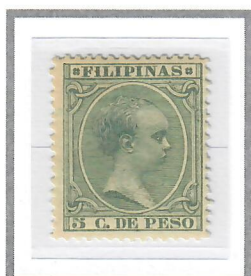
5c Green (1892)  
Cliché I – Gum Type A  
Scott #153



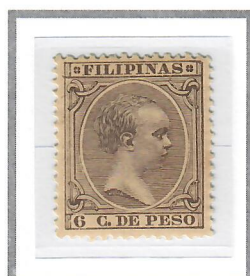
5c Green (1894)  
Cliché I – Gum Type B  
Unlisted in Scott



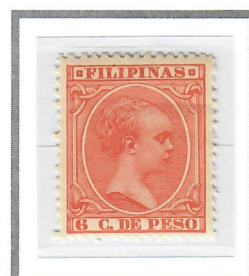
5c Violet Brown (1896)  
Cliché I – Gum Type C  
Scott #155



5c Blue Green (1896)  
Cliché I – Gum Type C  
Scott #156



6c Brown Violet (1892)  
Cliché II – Gum Type A  
Scott #157



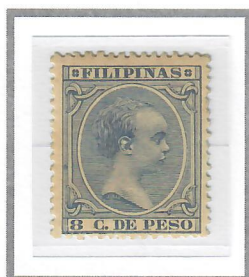
6c Red Orange (1894)  
Cliché II – Gum Type B  
Scott #158



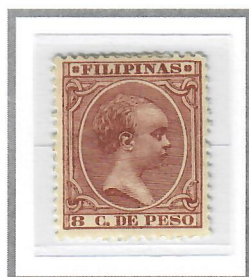
6c Carmine Rose (1896)  
Cliché II – Gum Type C  
Scott #159



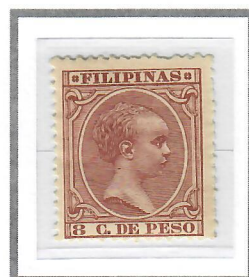
8c Yellow Green (1890)  
Cliché I – Gum Type A  
Scott #160



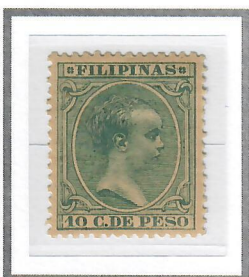
8c Ultramarine (1892)  
Cliché I – Gum Type A  
Scott #161



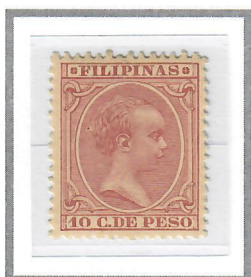
8c Red Brown (1894)  
Cliché I – Gum Type B  
Scott #162



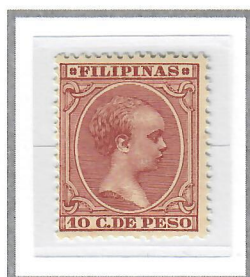
8c Red Brown (1896)  
Cliché I – Gum Type C  
Unlisted in Scott



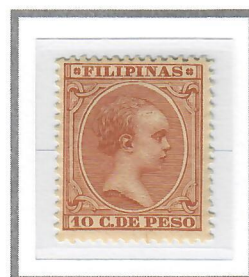
10c Blue Green (1890)  
Cliché I – Gum Type A  
Scott #163



10c Pale Claret (1891)  
Cliché I – Gum Type A  
Scott #164



10c Claret (1894)  
Cliché I – Gum Type B  
Scott #165



10c Yellow Brown (1896)  
Cliché III – Gum Type C  
Scott #166