

1890 – 1897

SPECIMEN – TYPE 1

MINISTERIO DE ULTRAMAR
MUESTRAS



5c Dark Blue (1890)
Scott #151



8c Yellow Green (1890)
Scott #160



10c Blue Green (1890)
Scott #163



20c Pale Vermilion (1890)
Scott #172



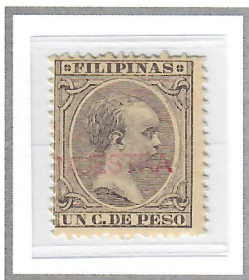
25c Brown (1890)
Scott #177



25c Brown (1890)
Scott #177

SPECIMEN – TYPE 2

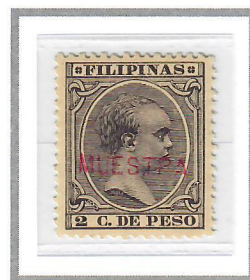
MUESTRA



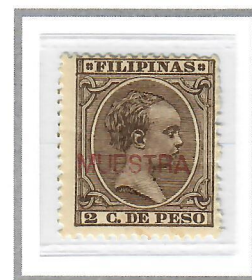
1c Violet (1890)
Scott #140



2c Claret (1894)
Scott #144



2c Violet (1894)
Scott #145



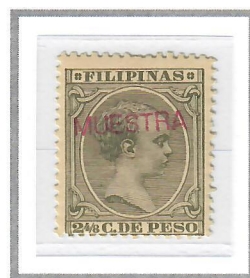
2c Dark Brown (1894)
Scott #146



2c Ultramarine (1896)
Scott #147



2-4/8c Dull Blue (1890)
Scott #149



2-4/8c Olive Grey (1892)
Scott #150



5c Dark Blue (1890)
Scott #151