

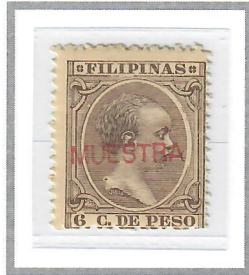
1890 - 1897

SPECIMEN - TYPE 2

MUESTRA



5c Green (1892)
Scott #153



6c Brown Violet (1892)
Scott #157



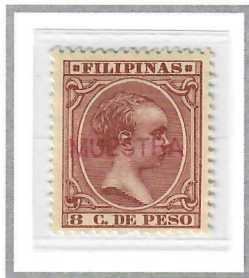
6c Red Orange (1894)
Scott #158



8c Yellow Green (1890)
Scott #160



8c Ultramarine (1892)
Scott #161



8c Red Brown (1894)
Scott #162



10c Pale Claret (1891)
Scott #164



10c Claret (1894)
Scott #165



12-4/8c Green (1890)
Scott #167



12-4/8c Orange (1892)
Scott #168



15c Red Brown (1892)
Scott #169



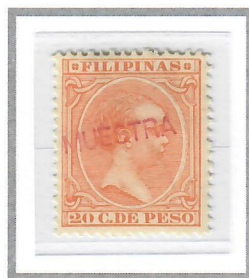
15c Rose (1894)
Scott #170



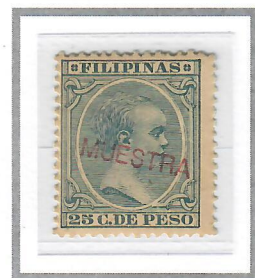
20c Grey Brown (1892)
Scott #174



20c Dark Violet (1894)
Scott #175



20c Orange (1896)
Scott #176



25c Dark Blue (1891)
Scott #178