

1890 – 1897

SPECIMEN – TYPE 3

MINISTERIO DE ULTRAMAR  
MUESTRAS



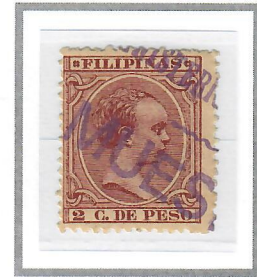
1c Violet (1892)  
Scott #140



1c Rose (1894)  
Scott #141



1c Blue Green (1896)  
Scott #142



2c Dark Claret (1890)  
Unlisted – Gum A



2c Claret (1894)  
Scott #144 – Gum B



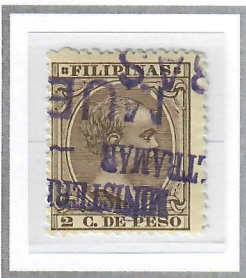
2c Violet (1892)  
Scott #145



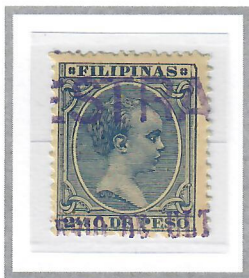
2c Dark Brown (1894)  
Scott #146



2c Ultramarine (1896)  
Scott #147



2c Grey Brown (1896)  
Scott #148



2-4/8c Dull Blue (1890)  
Scott #149



2-4/8c Olive Grey (1892)  
Scott #150



5c Dark Blue (1890)  
Scott #151



5c Green (1892)  
Scott #153



2c Violet Brown (1896)  
Scott #155



5c Blue Green (1896)  
Scott #156



6c Brown Violet (1892)  
Scott #157