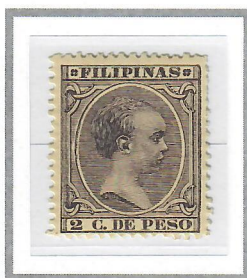


1890 – 1897

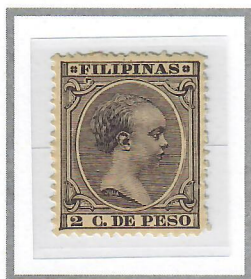
CONSTANT VARIETIES

COLOURED DOT CAUSING ELONGATED 'O' ON RIGHT SIDE IN 'PESO'



2c Violet (1892)
Scott #145

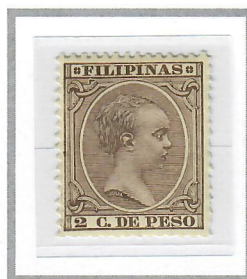
COLOURED ARROW BELOW 'F' IN 'FILIPINAS'



2c Violet (1892)
Scott #145

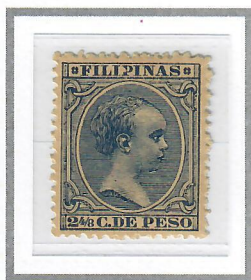


2c Claret (1894)
Scott #144

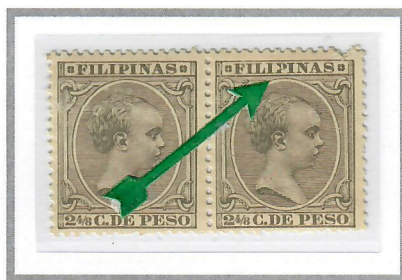


2c Dark Brown (1894)
Scott #146

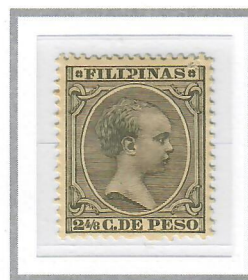
COLOURLESS CHIP IN 'P' OF 'FILIPINAS'



2-4/8c Dull Blue (1890)
Scott #149



2-4/8c Grey Olive (1892)
Scott #150



2-4/8c Olive Grey (1892)
Scott #150