

1890 – 1897

'CORREOS' TOWN CIRCULAR DATE CANCELLATION

Albay (Bicol)



2c Dark Claret (1890)
Cliché I – Unlisted

Albay (Bicol)



15c Red Brown (1892/44)
Cliché II – Scott #169

Albay (Bicol)



15c Rose (1894)
Cliché II – Scott #170

Antique (Visayas)



2c Claret (1894)
Cliché I – Scott #144

Bacolod (Negros)



2c Violet (1892)
Cliché I – Scott #145

Bacolod (Negros)



2c Violet (1892)
Cliché I – Scott #145

Bacolod (Negros)



2c Violet (1892)
Cliché I – Scott #145

Bacolod (Negros)



2c Dark Claret (1890)
Cliché I – Unlisted

Bacolod (Negros)



2c Claret (1894)
Cliché I – Scott #144

Bacolod (Negros)



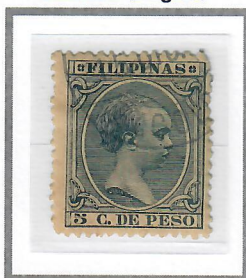
2c Claret (1894)
Cliché I – Scott #144

Bacolod (Negros)



2c Ultramarine (1896)
Cliché III – Scott #147

Bacolod (Negros)



5c Dark Blue (1890)
Cliché I – Scott #151

Bacolod (Negros)



5c Green (1892)
Cliché I – Scott #153

Bacolod (Negros)



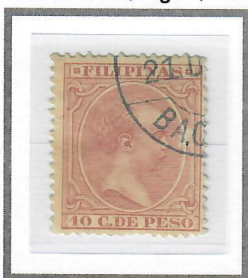
8c Yellow Green (1890)
Cliché I – Scott #160

Bacolod (Negros)



10c Pale Claret (1891)
Cliché I – Scott #164

Bacolod (Negros)



10c Pale Claret (1891)
Cliché I – Scott #164

Bacolod (Negros)



15c Red Brown (1892)
Cliché II – Scott #169

Bacolod (Negros)



15c Red Brown (1892)
Cliché II – Scott #169

Bacolod (Negros)



15c Blue Green (1896)
Cliché II – Scott #171