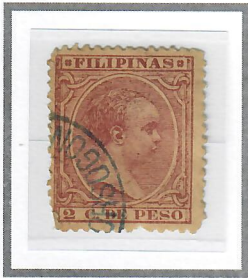


1890 - 1897

'COMUNICACIONES - SORSOGON' CIRCULAR DATE CANCEL  
WITH NO INNER CIRCULAR LINES



2c Dark Claret (1890)  
Cliché I - Unlisted



2c Violet (1892)  
Cliché I - Scott #145



2c Claret (1894)  
Cliché II - Scott #144



2c Claret (1894)  
Cliché II - Scott #144



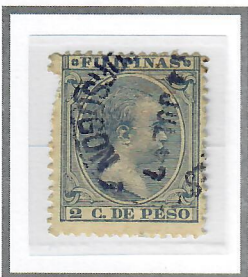
2c Claret (1894)  
Cliché II - Scott #144



2c Claret (1894)  
Cliché II - Scott #144



2c Claret (1894)  
Cliché II - Scott #144



2c Ultramarine (1896)  
Cliché III - Scott #147



2c Ultramarine (1896)  
Cliché III - Scott #147



2c Ultramarine (1896)  
Cliché III - Scott #147



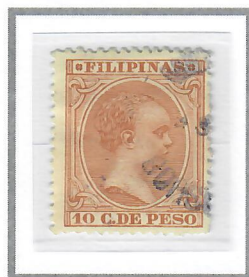
5c Violet Brown (1896)  
Cliché I - Scott #155



10c Pale Claret (1891)  
Cliché I - Scott #164



10c Claret (1894)  
Cliché I - Scott #165



10c Yellow Brown (1896)  
Cliché III - Scott #166



15c Rose (1894)  
Cliché II - Scott #170