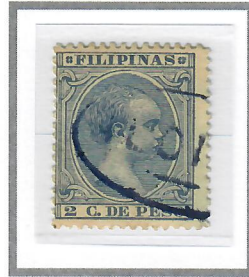


1890 – 1897

OBLONG 'ILOILO' TOWN CANCELLATION



2c Claret (1894)
Cliché I – Scott #144



2c Ultramarine (1896)
Cliché III – Scott #147



2c Ultramarine (1896)
Cliché III – Scott #147



2c Ultramarine (1896)
Cliché III – Scott #147



2c Ultramarine (1896)
Cliché III – Scott #147



2-4/8c Olive Grey (1892)
Cliché I – Scott #150



5c Violet Brown (1896)
Cliché I – Scott #155



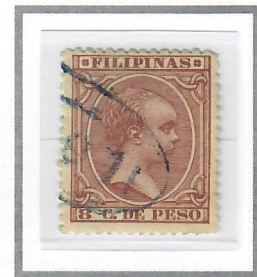
8c Red Brown (1894)
Cliché I – Scott #162



8c Red Brown (1894)
Cliché I – Scott #162



8c Red Brown (1894)
Cliché I – Scott #162



8c Red Brown (1894)
Cliché I – Scott #162



10c Yellow Brown (1896)
Cliché III – Scott #166



10c Yellow Brown (1896)
Cliché III – Scott #166



10c Yellow Brown (1896)
Cliché III – Scott #166



10c Yellow Brown (1896)
Cliché III – Scott #166