

1890 – 1897

POSTAGE STAMPS

PARRILLA CANCELLATION



2c Dark Claret (1890)  
Cliché I – Unlisted



2c Violet (1892)  
Cliché I – Scott #145



2c Violet (1892)  
Cliché II – Scott #145



2c Claret (1894)  
Cliché I – Scott #144



2c Claret (1894)  
Cliché II – Scott #144



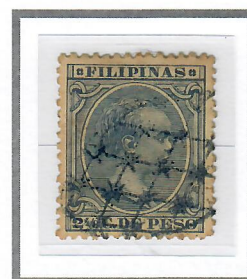
2c Dark Brown (1894)  
Cliché I – Scott #146



2c Dark Brown (1894)  
Cliché II – Scott #146



2c Ultramarine (1896)  
Cliché III – Scott #147



2-4/8c Dull Blue (1890)  
Cliché I – Scott #149



2-4/8c Grey Olive (1892)  
Cliché I – Scott #150



5c Green (1892)  
Cliché I – Scott #153



6c Red Orange (1894)  
Cliché II – Scott #158



6c Carmine Rose (1896)  
Cliché II – Scott #159



8c Yellow Green (1890)  
Cliché I – Scott #160



8c Ultramarine (1892)  
Cliché I – Scott #161



8c Red Brown (1894)  
Cliché I – Scott #162



10c Blue Green (1890)  
Cliché I – Scott #163



10c Pale Claret (1891)  
Cliché I – Scott #164