

1890 – 1897

CIRCLE OF DOTS CANCELLATION



1c Violet (1892)
Cliché II – Scott #140



2c Dark Claret (1890)
Cliché I – Unlisted



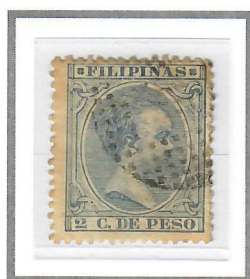
2c Violet (1892)
Cliché I – Scott #145



2c Violet (1892)
Cliché II – Scott #145



2c Claret (1894)
Cliché I – Scott #144



2c Ultramarine (1896)
Cliché III – Scott #147



5c Dark Blue (1890)
Cliché I – Scott #151



5c Violet Brown (1896)
Cliché I – Scott #155



8c Yellow Green (1890)
Cliché I – Scott #160



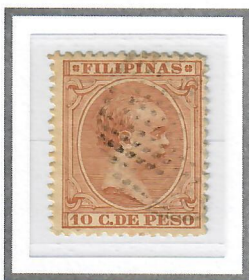
10c Blue Green (1890)
Cliché I – Scott #163



10c Pale Claret (1891)
Cliché I – Scott #164



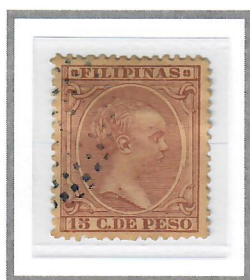
10c Claret (1894)
Cliché I – Scott #165



10c Yellow Brown (1896)
Cliché III – Scott #166



12-4/8c Green (1890)
Cliché I – Scott #167



15c Red Brown (1892)
Cliché II – Scott #169



15c Blue Green (1896)
Cliché II – Scott #171