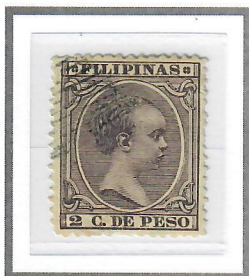


1890 – 1897

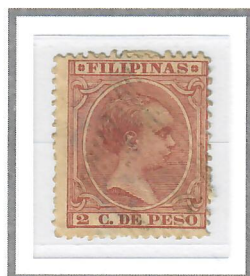
LINED RHOMBOID CANCELLATION



2c Violet (1892)  
Cliché I – Scott #145



2c Violet (1892)  
Cliché I – Scott #145



2c Claret (1894)  
Cliché I – Scott #144



2c Claret (1894)  
Cliché II – Scott #144



2c Ultramarine (1896)  
Cliché III – Scott #147



2c Ultramarine (1896)  
Cliché III – Scott #147



2c Ultramarine (1896)  
Cliché III – Scott #147



2c Ultramarine (1896)  
Cliché III – Scott #147



2c Dark Brown (1894)  
Cliché I – Scott #146



2c Dark Brown (1894)  
Cliché II – Scott #146



10c Pale Claret (1891)  
Cliché I – Scott #164



10c Yellow Brown (1896)  
Cliché III – Scott #166



15c Rose (1894)  
Cliché II – Scott #170



1m Olive Grey (1894)  
Cliché I – Scott #P11