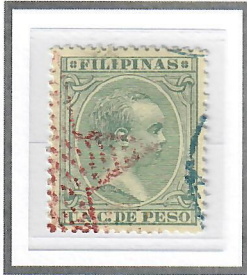


1890 – 1897

DOTTED STAR CANCELLATION



1c Blue Green (1896)
Cliché II – Scott #142



2c Dark Claret (1890)
Cliché I – Unlisted



2c Claret (1894)
Cliché I – Scott #144



2c Claret (1894)
Cliché II – Scott #144



2c Violet (1894)
Cliché I – Scott #145



2c Violet (1894)
Cliché II – Scott #145



2c Dark Brown (1894)
Cliché II – Scott #146



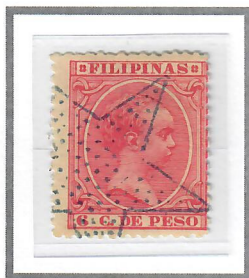
2c Ultramarine (1896)
Cliché III – Scott #147



2-4/8c Dull Blue (1890)
Cliché I – Scott #149



2-4/8c Grey Olive (1892)
Cliché I – Scott #150



6c Carmine Rose (1896)
Cliché II – Scott #159



10c Pale Claret (1891)
Cliché I – Scott #164



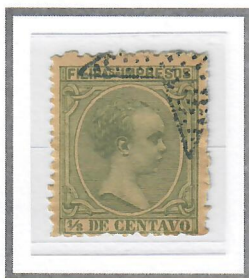
10c Claret (1894)
Cliché I – Scott #165



10c Yellow Brown (1896)
Cliché III – Scott #166



15c Rose (1894)
Cliché II – Scott #170



1/8c Green (1892)
Cliché I – Scott #P6



1/8c Orange Brown (1894)
Cliché I – Scott #P7



1m Ultramarine (1896)
Cliché III – Scott #P12



2m Brown (1896)
Cliché I – Scott #P16