

1890 – 1897

BOXED 'R / MANILA' REGISTRATION CANCELLATION



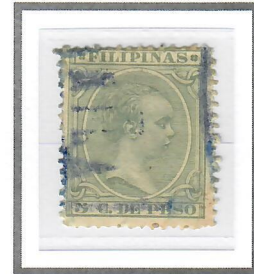
2c Dark Brown (1894)  
Cliché II – Scott #146



5c Green (1892)  
Cliché I – Scott #153



5c Green (1892)  
Cliché I – Scott #153



5c Green (1892)  
Cliché I – Scott #153



8c Ultramarine (1892)  
Cliché I – Scott #161



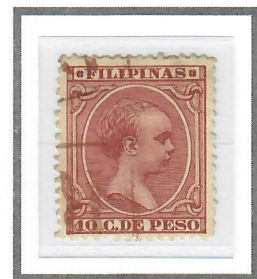
8c Ultramarine (1892)  
Cliché I – Scott #161



10c Pale Claret (1891)  
Cliché I – Scott #164



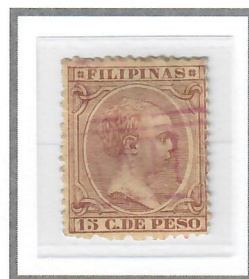
10c Pale Claret (1891)  
Cliché I – Scott #164



10c Claret (1894)  
Cliché I – Scott #165



15c Red Brown (1892)  
Cliché II – Scott #169



15c Red Brown (1892)  
Cliché II – Scott #169



15c Red Brown (1892)  
Cliché II – Scott #169



15c Rose (1894)  
Cliché II – Scott #170

FANCY BOXED 'CERTIFICADO' REGISTRATION CANCELLATION



5c Green (1892)  
Cliché I – Scott #153



15c Rose (1894)  
Cliché II – Scott #170