

JANUARY 1, 1898

SPECIMEN – TYPE 5

MUESTRA



1m Orange Brown



2m Orange Brown



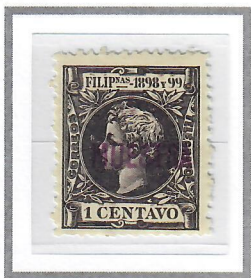
3m Orange Brown



4m Orange Brown



5m Orange Brown



1c Black Violet



2c Dark Blue Green



3c Dark Brown



4c Orange



5c Carmine Rose



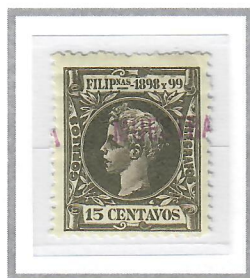
6c Dark Blue



8c Grey Brown



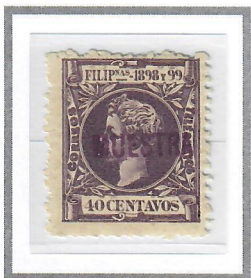
10c Vermilion



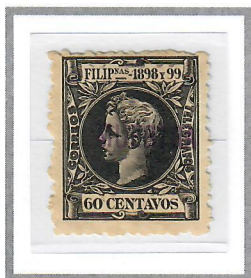
15c Dull Olive Green



20c Maroon



40c Violet



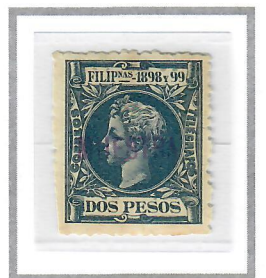
60c Black



80c Red Brown



1p Yellow Green



2p Slate Blue