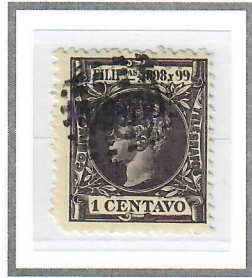


**JANUARY 1, 1898**

**SPECIMEN – TYPE 5**

**WITH HANDSTAMP CANCEL OBLITERATING SPECIMEN OVERPRINT**



1c Black Violet



4c Orange



5c Carmine Rose



1c Black Violet



2c Dark Blue Green



3c Dark Brown



5c Carmine Rose