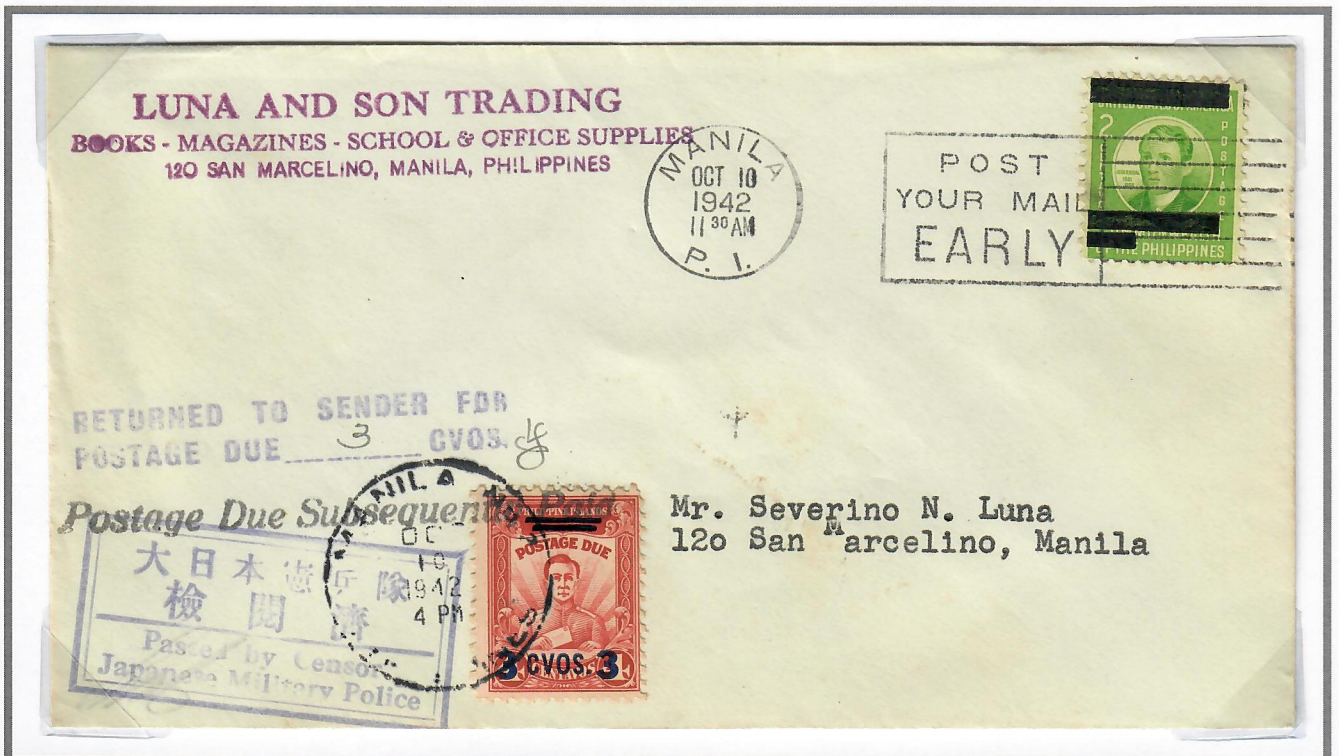


SEPTEMBER 1, 1942

3c POSTAGE DUE
WITH HAND-RULED DELETING BARS



October 9, 1942 – Manila Circulating Cover with incorrect 2c Rate
3c Postage Due affixed to cover shortfall of the 5c First Class Rate



October 10, 1942 – Manila Circulating Cover with incorrect 2c Rate
3c Postage Due affixed to cover shortfall of the 5c First Class Rate