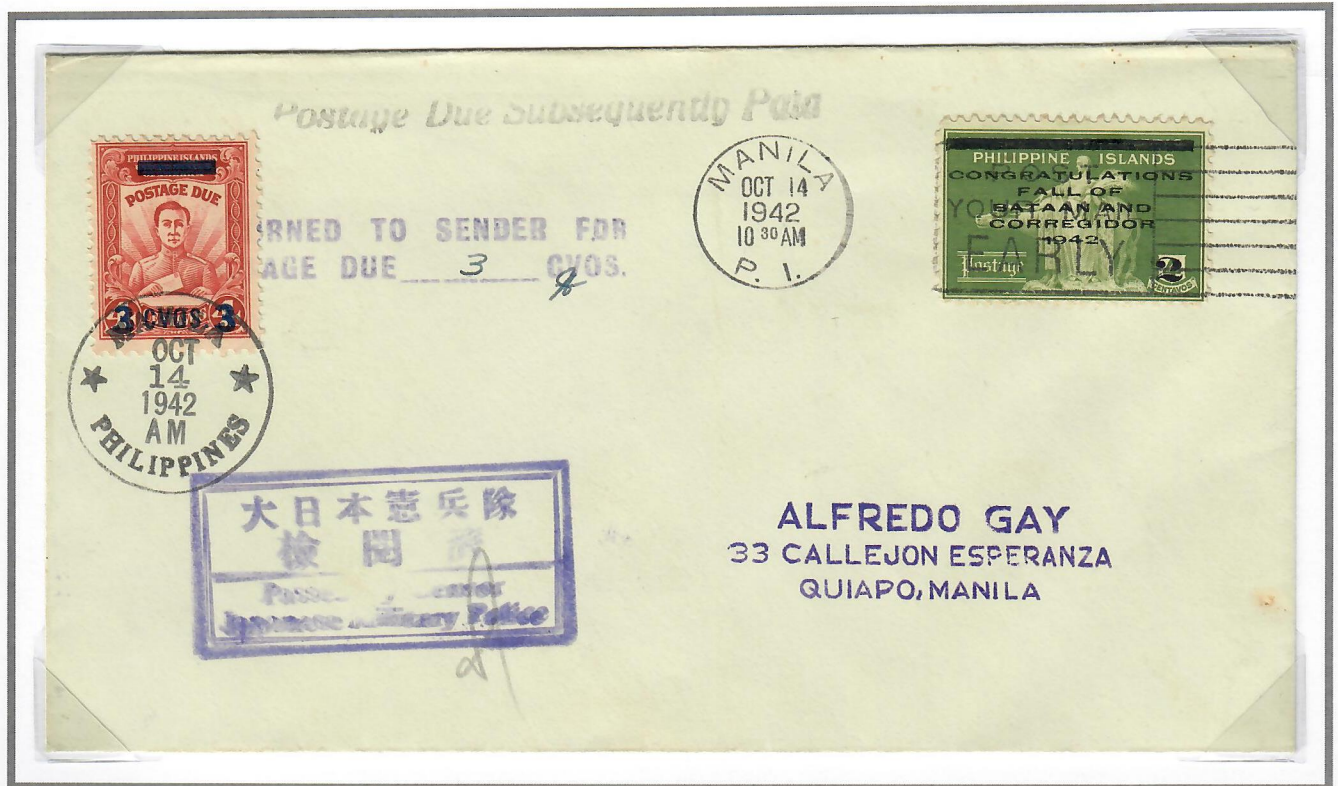
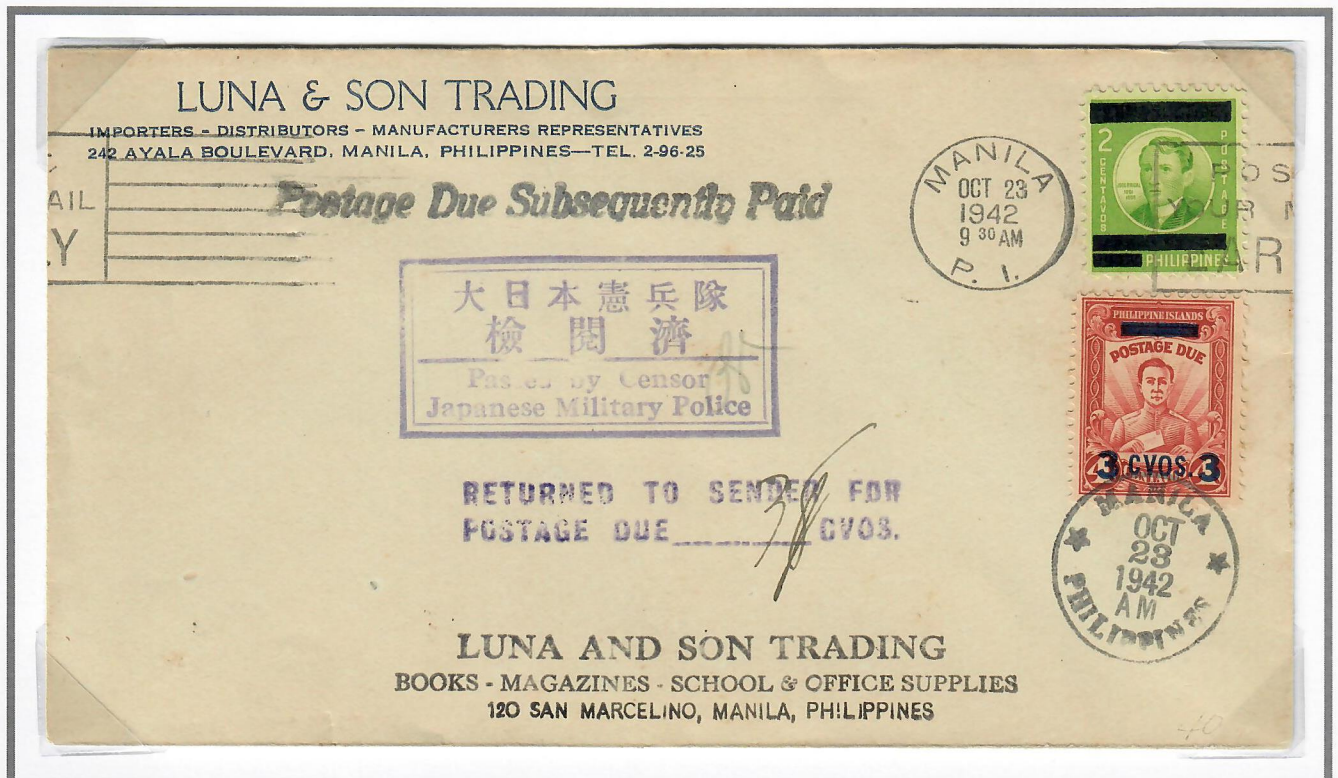


SEPTEMBER 1, 1942

3c POSTAGE DUE
SINGLE DELETING BAR



October 14, 1942 – Manila Circulating Cover with incorrect 2c Rate
3c Postage Due affixed to cover shortfall of the 5c First Class Rate



October 23, 1942 – Manila Circulating Cover with incorrect 2c Rate
3c Postage Due affixed to cover shortfall of the 5c First Class Rate