

RECUT DIES OF 2C WASHINGTON ISSUE, CONTINUED

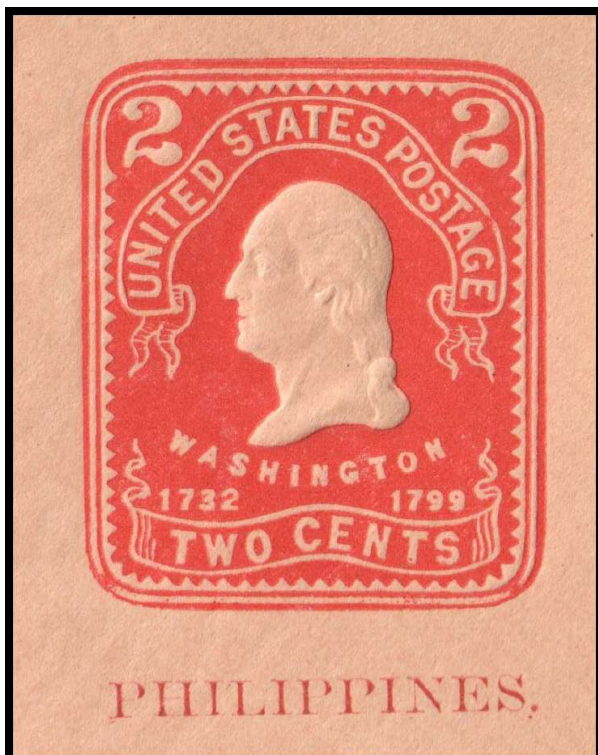


Type 101

Third and fourth teeth below left numeral are barbed

Faint branch of lower line of ribbon under W of TWO

(U28B)



Type 102

Similar to original die but engraving deepened and more lines in swallowtail

(U29A)

Type 121 – A in STATES solid. Teeth touch line under TW of TWO. I of WASHINGTON high. S of CENTS tips backward. 1 of 1732 low. (U29B)