

POSTAL STATIONERY OF THE PHILIPPINES
UNITED STATES ADMINISTRATION

Scott U41 - Scott U42
2C AND 4C JUAN DE LA CRUZ ENVELOPES

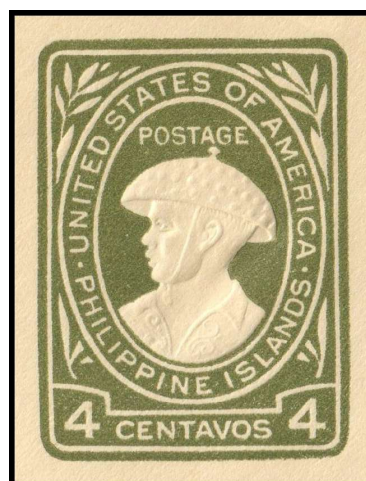
First issued in 1935, the envelopes were especially designed for use in the Philippines by the Bureau of Engraving and Printing, Washington D.C., USA. They were manufactured by the regular United States contractor, the International Envelope Corporation, Dayton, Ohio, USA. Two values were produced as follows: 2-centavos in Carmine and 4-centavos in Olive-Green, both printed on White envelopes.

Unlike the postage stamps and postal cards, which had the word “COMMONWEALTH” included in the design or overprinted, the word “COMMONWEALTH” does not appear on the embossed indicia on these envelopes.

The design depicts “Juan de la Cruz” produced from a reproduction of a bust made by Guillermo Tolentino, a famous sculptor of the Philippines. “Juan de la Cruz” is symbolically used in the Philippines to represent the Filipino, somewhat equivalent of Uncle Sam of America. Juan de la Cruz was coined by Robert McCulloch-Dick, the editor and publisher of The Philippine Free Press in the 1900s. He noticed the frequency with which the names appeared on police blotters and court dockets. He often wrote small verses about Juan de la Cruz in The Philippines’ Free Press who was often depicted narrating the petty crimes committed by them. Later on, McCulloch-Dick widened his idea of Juan until he made Juan de la Cruz as a typical Filipino. Juan de la Cruz is associated with the image of a native-looking man wearing a salakot (dome-shaped hat), camisa de chino (thin cotton collarless cuffless shirt), native trousers and slippers. Jorge Pineda, a resident cartoonist of The Philippines’ Free Press, first drew the image of Juan in 1912. Through the years the idea was followed by other newspapermen and Juan de la Cruz appeared into various pages of books, newspapers and other printed materials.



2c Carmine



4c Olive-Green

KNIFE TYPES

The term “Knife” refers to the shape of an envelope, more specifically the shape of the paper before it is folded. Knife is the technical term for the cutters of the machine by which the envelope blanks are cut out. In philately, it is principally used to denote the varieties in shape of the United States envelopes, where the back shows several varieties in the cutting of the flaps. Only two Knife types exist on these issues with no variations on each value.



Knife Type 2 (UPSS Types 57)



Knife Type 3 (UPSS Type 106)

WATERMARK TYPES



Type 33
(1933)



Type 36
(1937)



Type 39
(1941)

CORNER CARDS

A number of “General Request” envelopes were produced for general over-the-counter sales and were supplied to the post office in large quantities. They were produced with dotted lines in the upper left corner, with the intent of encouraging purchasers to write in their name and return address details.

Two types of “General Request” corner cards were used for these issues. In addition, envelopes exist with “Money Order / Giro Postal” imprint in black on the bottom left section of the envelope.

Return in.....days to

.....

POST OFFICE.....

Province.....PHILIPPINE IS.

CC-1

From.....

POST OFFICE.....

Province.....PHILIPPINE IS.

CC-9

MONEY ORDER
GIRO POSTAL

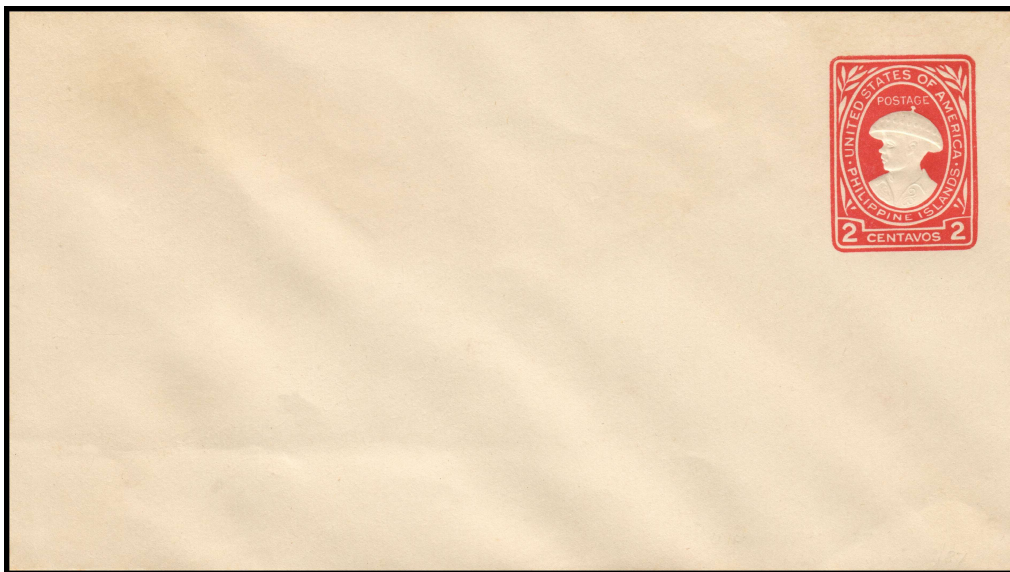
MO-1

Scott U41

2c Carmine (Juan de la Cruz) on White Paper

Knife Type 2 (High Back)

| | UPSS | Size | Knife | Watermark | Corner Card |
|--------------|------|--------------|------------------|-----------|-------------|
| U41Aa | 105 | 89mm x 160mm | Type 2 (UPSS 57) | 33 | - |
| U41Aa | 105a | 89mm x 160mm | Type 2 (UPSS 57) | 33 | CC-1 |
| U41Aa | 105b | 89mm x 160mm | Type 2 (UPSS 57) | 33 | CC-1 & MO-1 |
| U41Ab | 106 | 89mm x 160mm | Type 2 (UPSS 57) | 36 | - |
| U41Ab | 106a | 89mm x 160mm | Type 2 (UPSS 57) | 36 | CC-1 |
| U41Ab | 106b | 89mm x 160mm | Type 2 (UPSS 57) | 36 | CC-1 & MO-1 |
| U41Ac | 107 | 89mm x 160mm | Type 2 (UPSS 57) | 39 | - |
| U41Ac | 107a | 89mm x 160mm | Type 2 (UPSS 57) | 39 | CC-1 |



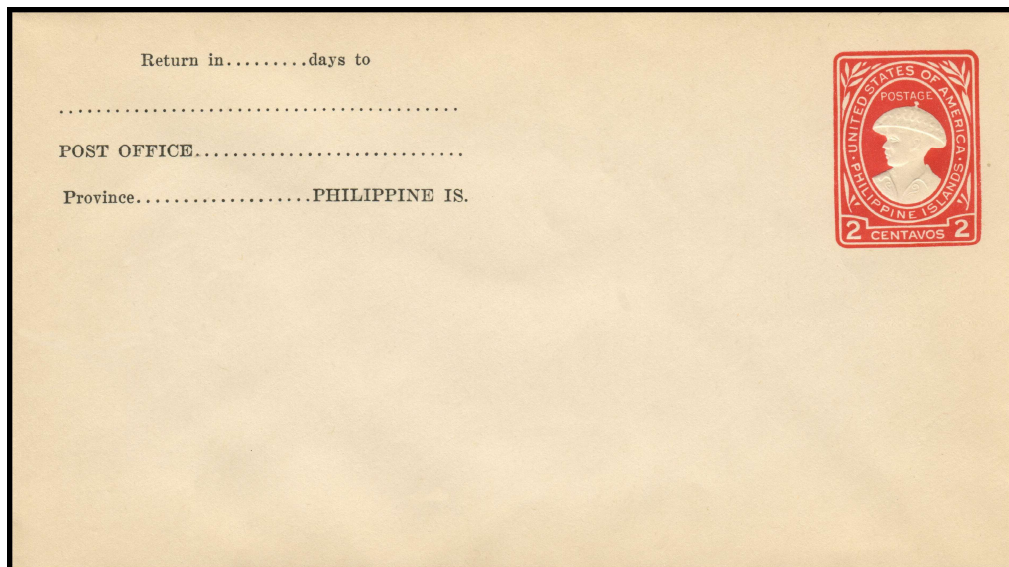
U41Aa, U41Ab, U41Ac

Scott U41, Continued

2c Carmine (Juan de la Cruz) on White Paper

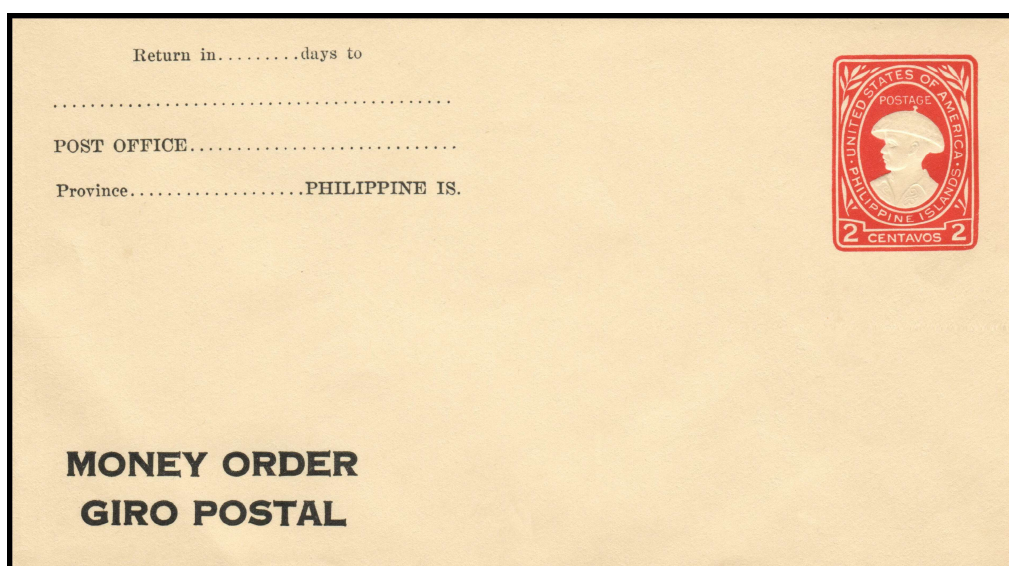
Knife Type 2 (High Back)

Corner Card (CC-1)



U41Aa, U41Ab, U41Ac

Corner Card (CC-1) and Money Order (MO-1)



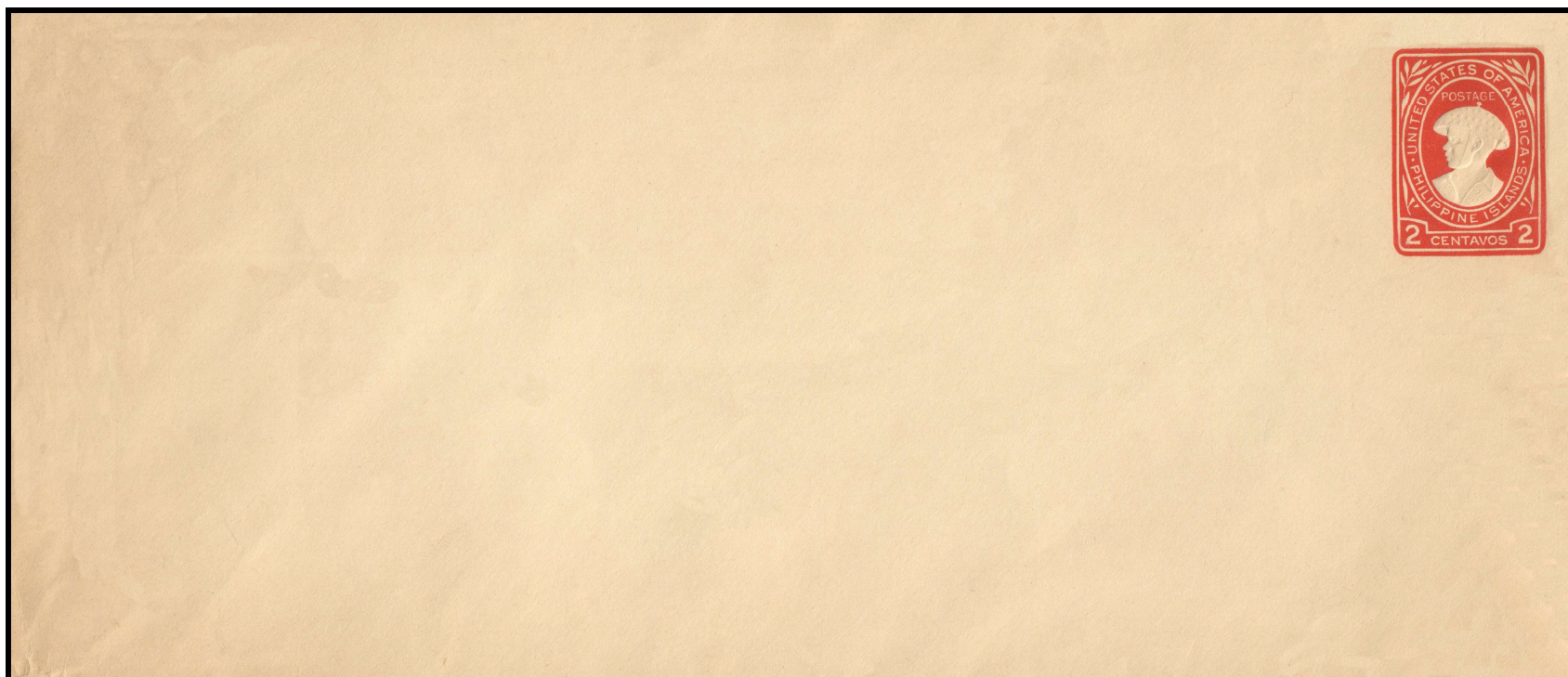
U41Aa, U41Ab

Scott U41, Continued

2c Carmine (Juan de la Cruz) on White Paper

Knife Type 3 (High Back)

| | UPSS | Size | Knife | Watermark | Corner Card |
|--------------|------|---------------|-------------------|-----------|-------------|
| U41Ba | 108 | 105mm x 241mm | Type 3 (UPSS 106) | 33 | - |
| U41Bb | 109 | 105mm x 241mm | Type 3 (UPSS 106) | 36 | - |



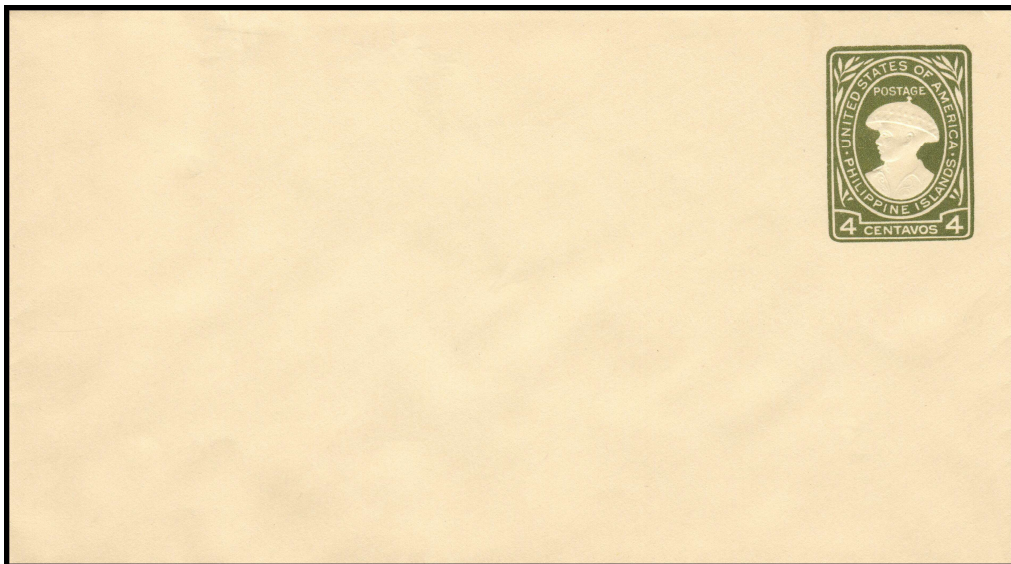
U41Ba, U41Bb

Scott U42

4c Olive-Green (Juan de la Cruz) on White Paper

Knife Type 2 (High Back)

| | UPSS | Size | Knife | Watermark | Corner Card |
|--------------|------|--------------|------------------|-----------|-------------|
| U42Aa | 110 | 89mm x 160mm | Type 2 (UPSS 57) | 33 | - |
| U42Aa | 110a | 89mm x 160mm | Type 2 (UPSS 57) | 33 | CC-1 |
| U42Aa | 110b | 89mm x 160mm | Type 2 (UPSS 57) | 33 | CC-9 |
| U42Ab | 111 | 89mm x 160mm | Type 2 (UPSS 57) | 36 | - |
| U42Ab | 111a | 89mm x 160mm | Type 2 (UPSS 57) | 36 | CC-9 |



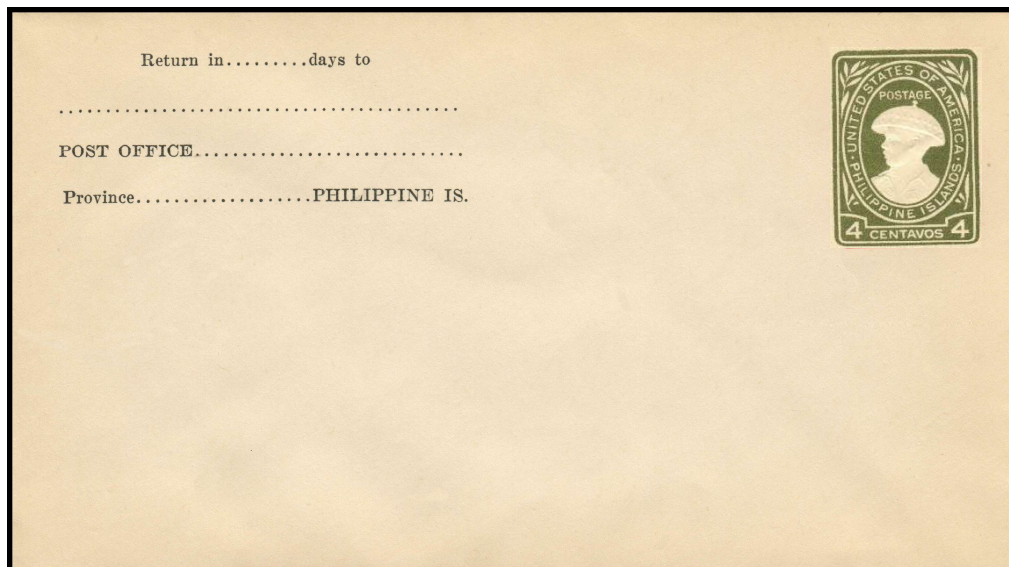
U42Aa, U42Ab

Scott U42, Continued

4c Olive-Green (Juan de la Cruz) on White Paper

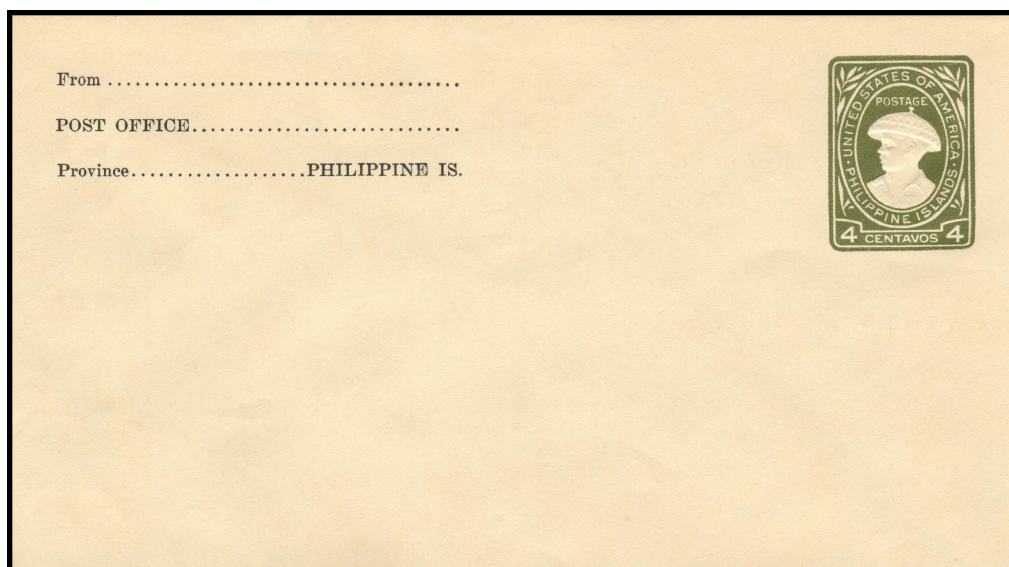
Knife Type 2 (High Back)

Corner Card (CC-1)



U42Aa

Corner Card (CC-9)



U42Aa, U42Ab

Scott U42, Continued

4c Olive-Green (Juan de la Cruz) on White Paper

Knife Type 3 (High Back)

| | UPSS | Size | Knife | Watermark | Corner Card |
|-------------|------|---------------|-------------------|-----------|-------------|
| U42B | 112 | 105mm x 241mm | Type 3 (UPSS 106) | 33 | - |



U42B