

**POSTAL STATIONERY OF THE PHILIPPINES**  
**UNITED STATES ADMINISTRATION**

**Scott U42A - Scott U45**  
**VICTORY OVERPRINTED ENVELOPES**

Issued on 8 November 1944 at Tacloban, Leyte where a number of envelopes of the Commonwealth series were overprinted by handstamp in purple ink with the word "VICTORY".

The "VICTORY" overprinted was carried out with a rubber handstamp which was broken during the operation. There are two known types of overprint. Type 1 has all the letters on an even line; Type 2 shows a hump between "VIC" and "TORY" with the left side of the leg of "T" showing a small semi-circular blank space. This was caused by the head of the pin, used to repair the handstamp, failing to pick up ink. There are no examples of the Type 1 on the postal stationery issues, therefore only Type 2 overprints are known to have been produced.

## KNIFE TYPES

The term “Knife” refers to the shape of an envelope, more specifically the shape of the paper before it is folded. Knife is the technical term for the cutters of the machine by which the envelope blanks are cut out. In philately, it is principally used to denote the varieties in shape of the United States envelopes, where the back shows several varieties in the cutting of the flaps. Only two Knife types exist on these issues with no variations on each value.



**Knife Type 2** (UPSS Types 57)



**Knife Type 3** (UPSS Type 106)

## WATERMARK TYPES



**Type 33**  
(1933)



**Type 36**  
(1937)



**Type 39**  
(1941)

## CORNER CARDS

A number of “General Request” envelopes were produced for general over-the-counter sales and were supplied to the post office in large quantities. They were produced with dotted lines in the upper left corner, with the intent of encouraging purchasers to write in their name and return address details.

Two types of “General Request” corner cards were used for these issues. In addition, envelopes exist with “Money Order / Giro Postal” imprint in black on the bottom left section of the envelope.

Return in.....days to

.....

POST OFFICE.....

Province.....PHILIPPINE IS.

CC-1

From.....

POST OFFICE.....

Province.....PHILIPPINE IS.

CC-9

**MONEY ORDER**

**GIRO POSTAL**

MO-1

## Scott U42A

**2c Green (Jose Rizal) on White Paper**

	UPSS	Original Issue	Knife	Watermark	Corner Card
<b>U42A</b>	119	Scott U30			-

Only 1 Envelope Known

**No Scan Available**

U42A

## Scott U43

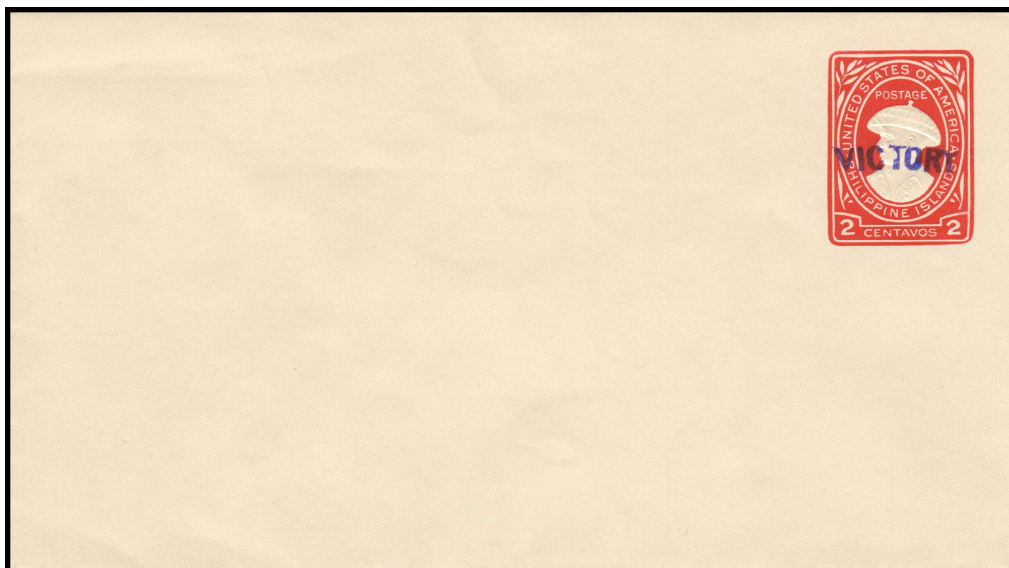
### 2c Carmine (Juan de la Cruz) on White Paper

#### Knife Type 2 (High Back)

	UPSS	Original Issue	Knife	Watermark	Corner Card
<b>U43Aa</b>	120	U41Aa / UPSS-105a	Type 2 (UPSS 57)	33	CC-1
<b>U43Aa</b>	120a	U41Aa / UPSS-105b	Type 2 (UPSS 57)	33	CC-1 & MO-1
<b>U43Ab</b>	121	U41Ab / UPSS-106	Type 2 (UPSS 57)	36	-
<b>U43Ab</b>	121a	U41Ab / UPSS-106a	Type 2 (UPSS 57)	36	CC-1
<b>U43Ab</b>	121b	U41Ab / UPSS-106b	Type 2 (UPSS 57)	36	CC-1 & MO-1
<b>U43Ac</b>	122	U41Ac / UPSS-107	Type 2 (UPSS 57)	39	-

A combined total of 5,302 Envelopes Produced (UPSS-120, UPSS-121, UPSS-121a, UPSS-122)

A combined total of 1,128 Envelopes Produced (UPSS-120a and UPSS-121b)



U43Ab, U43Ac

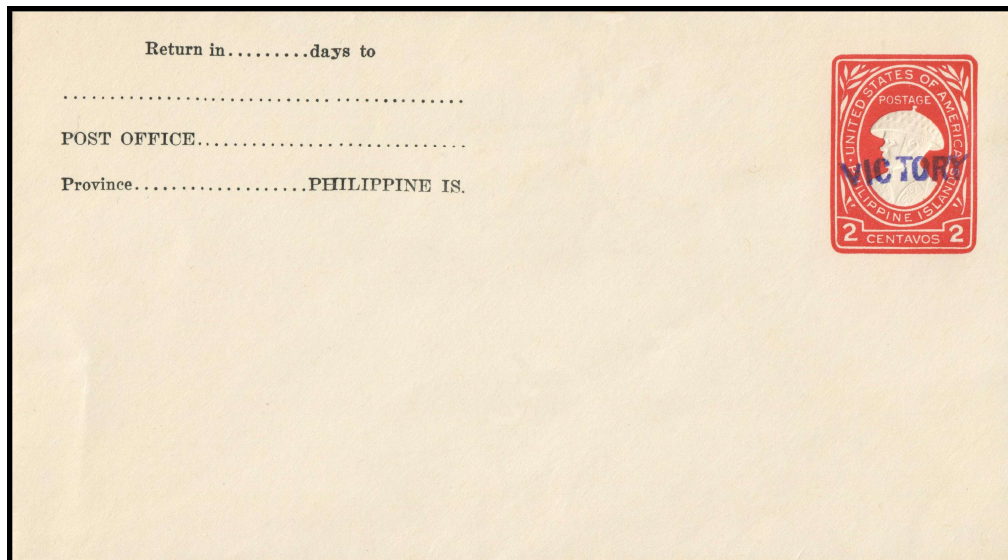


## Scott U43, Continued

### 2c Carmine (Juan de la Cruz) on White Paper

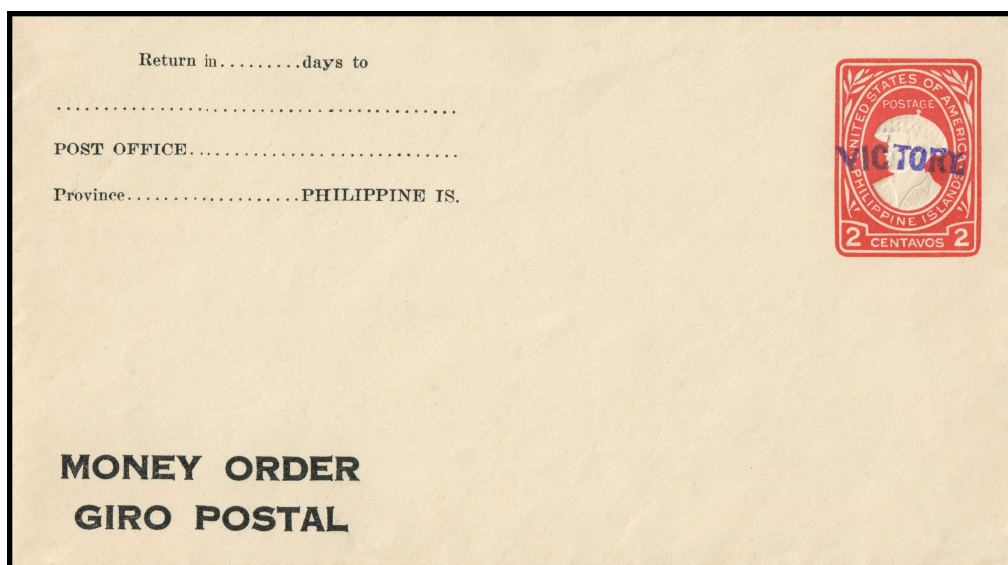
#### Knife Type 2 (High Back)

#### Corner Card (CC-1)



U43Aa, U43Ab

#### Corner Card (CC-1) and Money Order (MO-1)



U43Aa, U43Ab

## Scott U43

**2c Carmine (Juan de la Cruz) on White Paper**

**Knife Type 2 (High Back)**

	UPSS	Original Issue	Knife	Watermark	Corner Card
<b>U43B</b>	123	U41Ba / UPSS-108	Type 3 (UPSS 106)	33	-

A total of 64 Envelopes Produced

**No Scan Available**

U43Aa, U43Bb

## Scott U44

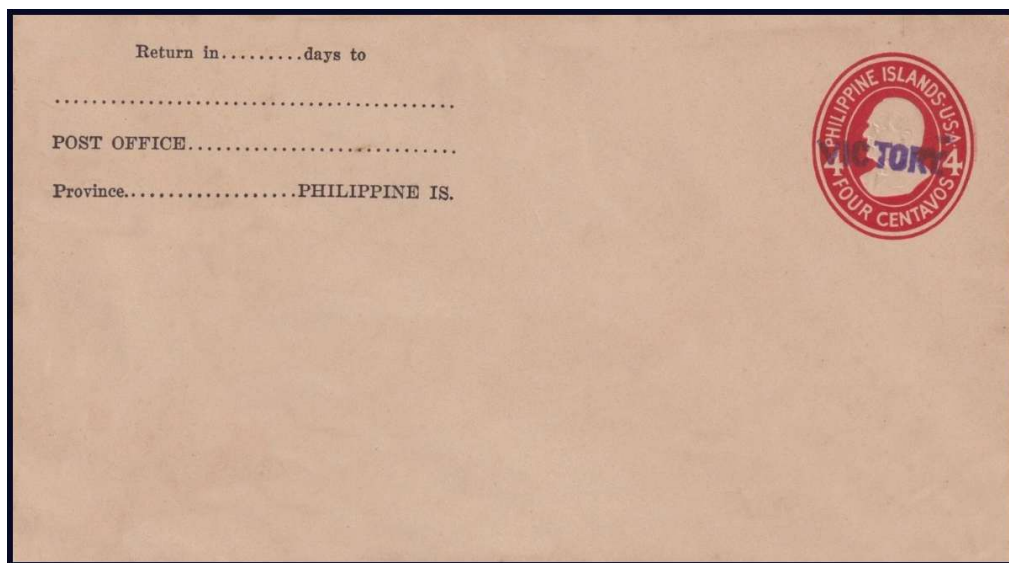
### 4c Carmine (McKinley) on White Wove Paper

#### Knife Type 2 (High Back)

	UPSS	Original Issue	Knife	Watermark	Corner Card
<b>U44</b>	124	U35Ad / UPSS 84a	Type 2 (UPSS 57)	33	CC-1

A total of 32 Envelopes Produced

#### Corner Card (CC-1)



**U44**



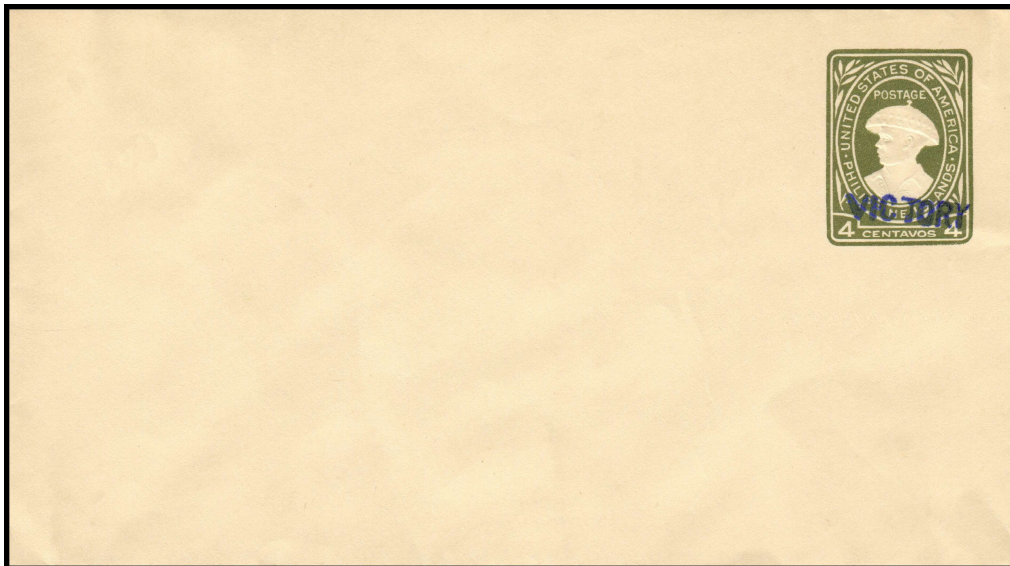
## Scott U45

**4c Olive-Green (Juan de la Cruz) on White Paper**

### Knife Type 2 (High Back)

	UPSS	Original Issue	Knife	Watermark	Corner Card
<b>U45</b>	125	UPSS 110	Type 2 (UPSS 57)	33	-
<b>U45</b>	125a	110a	Type 2 (UPSS 57)	33	CC-1
<b>U45</b>	125b	110b	Type 2 (UPSS 57)	33	CC-9

A total of 379 Envelopes Produced (combined for all types above)



**U45**

## Scott U45, Continued

**4c Olive-Green (Juan de la Cruz) on White Paper**

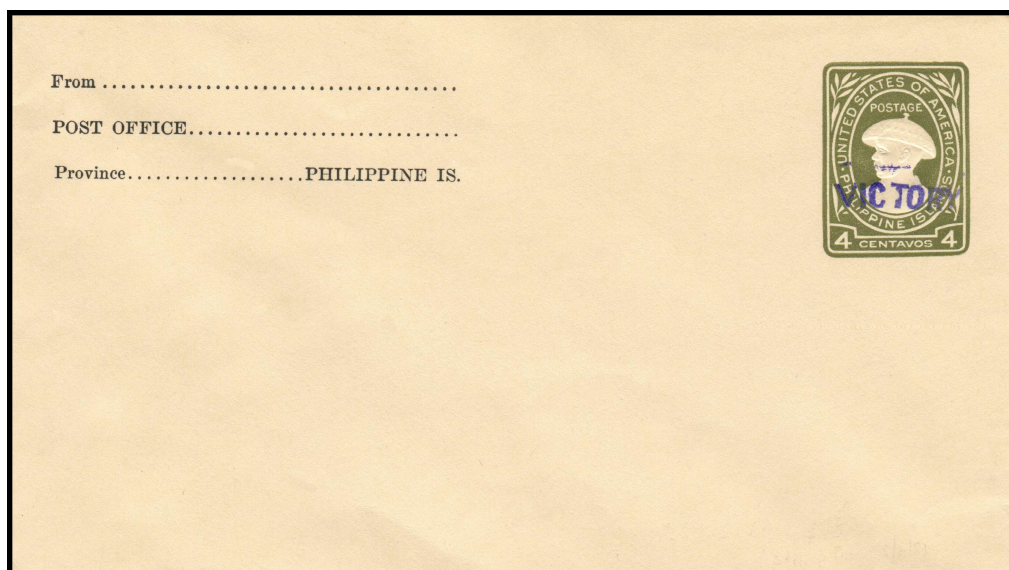
**Knife Type 2 (High Back)**

**Corner Card (CC-1)**

**No Scan Available**

U45

**Corner Card (CC-9)**



U45

## Scott U42A – U45

### VICTORY Overprinted Envelopes

	UPSS	Original Issue	Knife	Watermark	Corner Card
<b>2c Green (Jose Rizal) on White Paper</b>					
<b>U42A</b>	119	Scott U30	??	??	-
<b>2c Carmine (Juan de la Cruz) on White Paper</b>					
<b>U43Aa</b>	120	U41Aa / UPSS-105a	Type 2 (UPSS 57)	33	CC-1
<b>U43Aa</b>	120a	U41Aa / UPSS-105b	Type 2 (UPSS 57)	33	CC-1 & MO-1
<b>U43Ab</b>	121	U41Ab / UPSS-106	Type 2 (UPSS 57)	36	-
<b>U43Ab</b>	121a	U41Ab / UPSS-106a	Type 2 (UPSS 57)	36	CC-1
<b>U43Ab</b>	121b	U41Ab / UPSS-106b	Type 2 (UPSS 57)	36	CC-1 & MO-1
<b>U43Ac</b>	122	U41Ac / UPSS-107	Type 2 (UPSS 57)	39	-
<b>U43B</b>	123	U41Ba / UPSS-108	Type 3 (UPSS 106)	33	-
<b>4c Carmine (McKinley) on White Wove Paper</b>					
<b>U44</b>	124	U35Ad / UPSS 84a	Type 2 (UPSS 57)	33	CC-1
<b>Overprinted on 4c Olive-Green (Juan de la Cruz)</b>					
<b>U45</b>	125	UPSS 110	Type 2 (UPSS 57)	33	-
<b>U45a</b>	125a	110a	Type 2 (UPSS 57)	33	CC-1
<b>U45b</b>	125b	110b	Type 2 (UPSS 57)	33	CC-9